

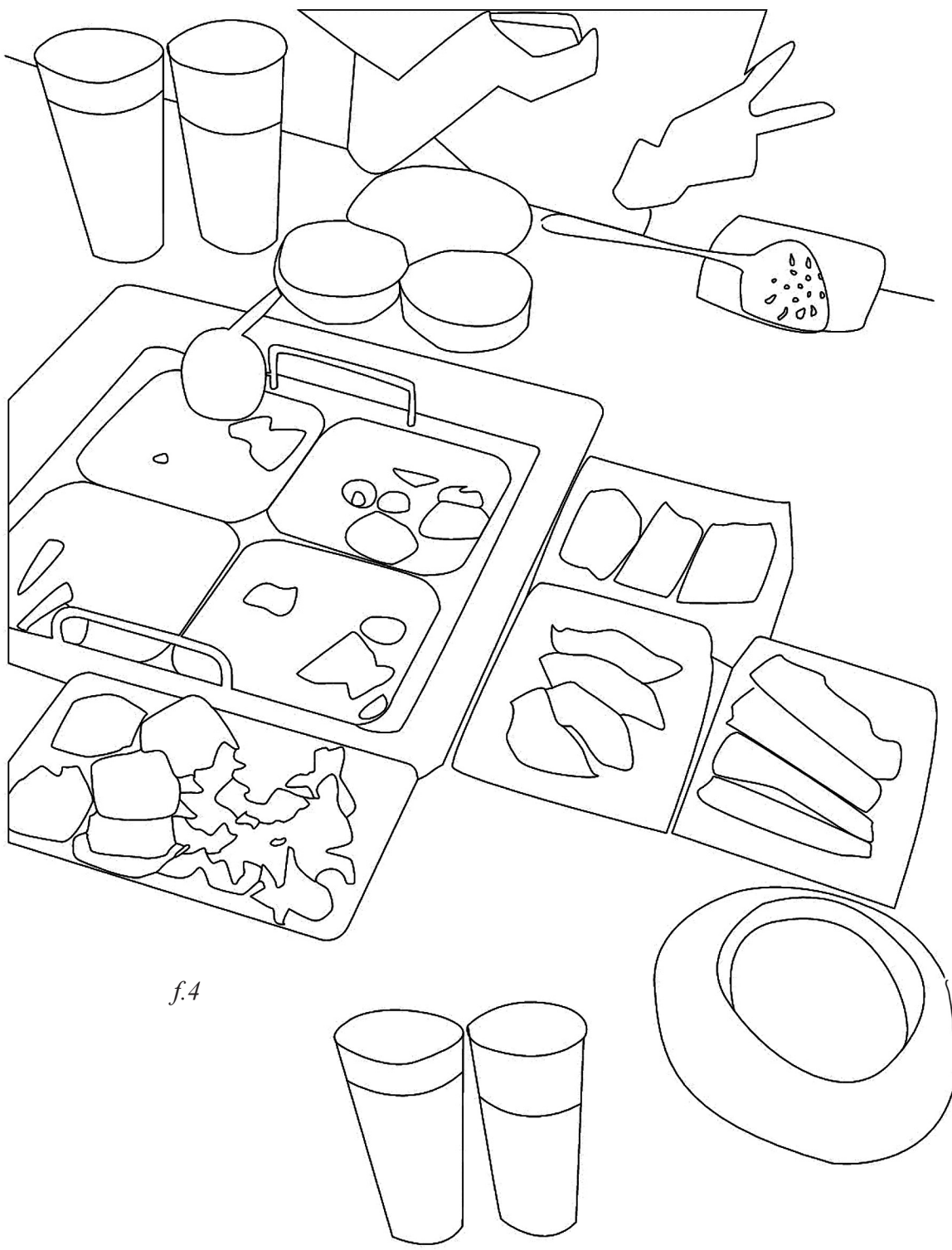
f.1



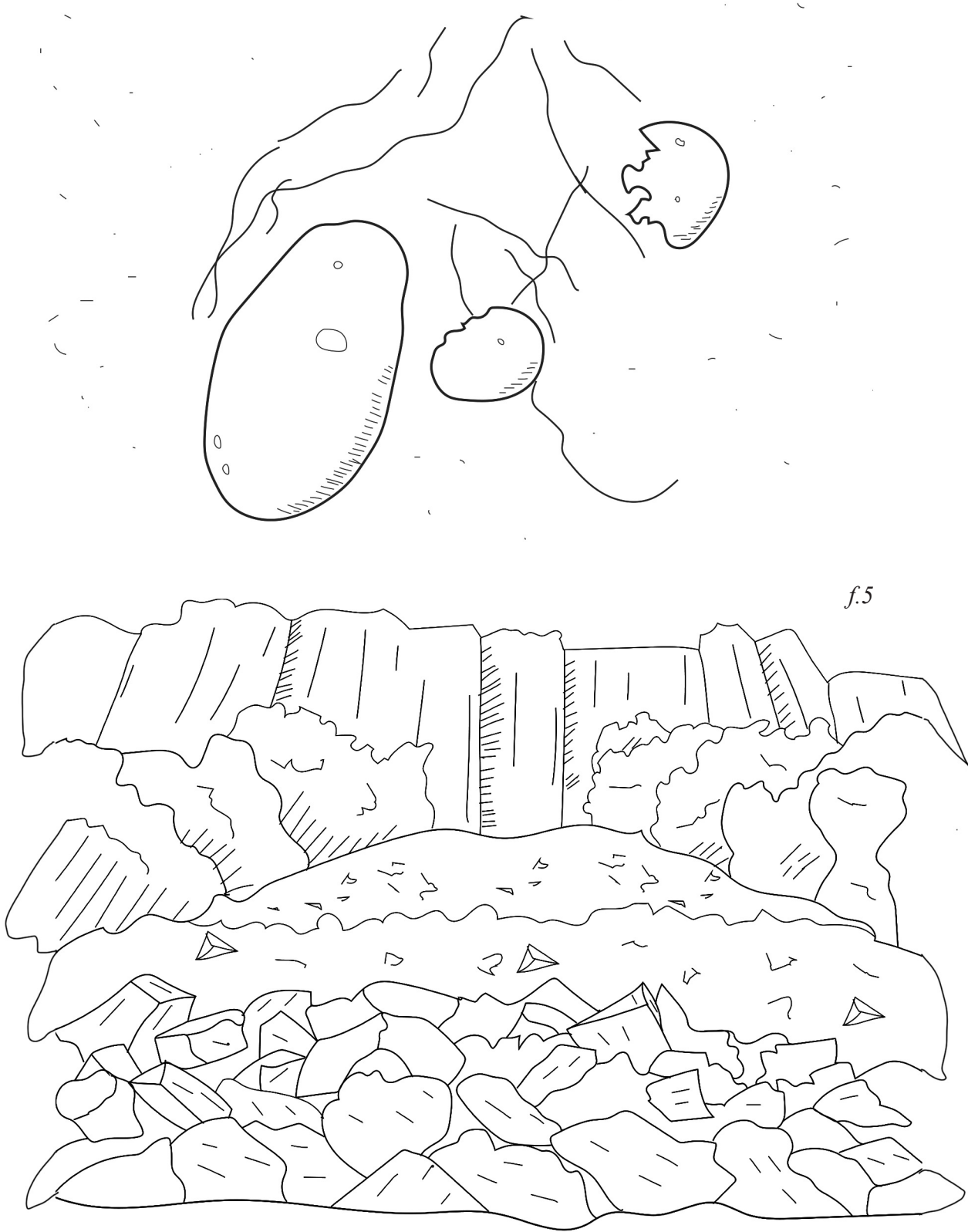
f.2



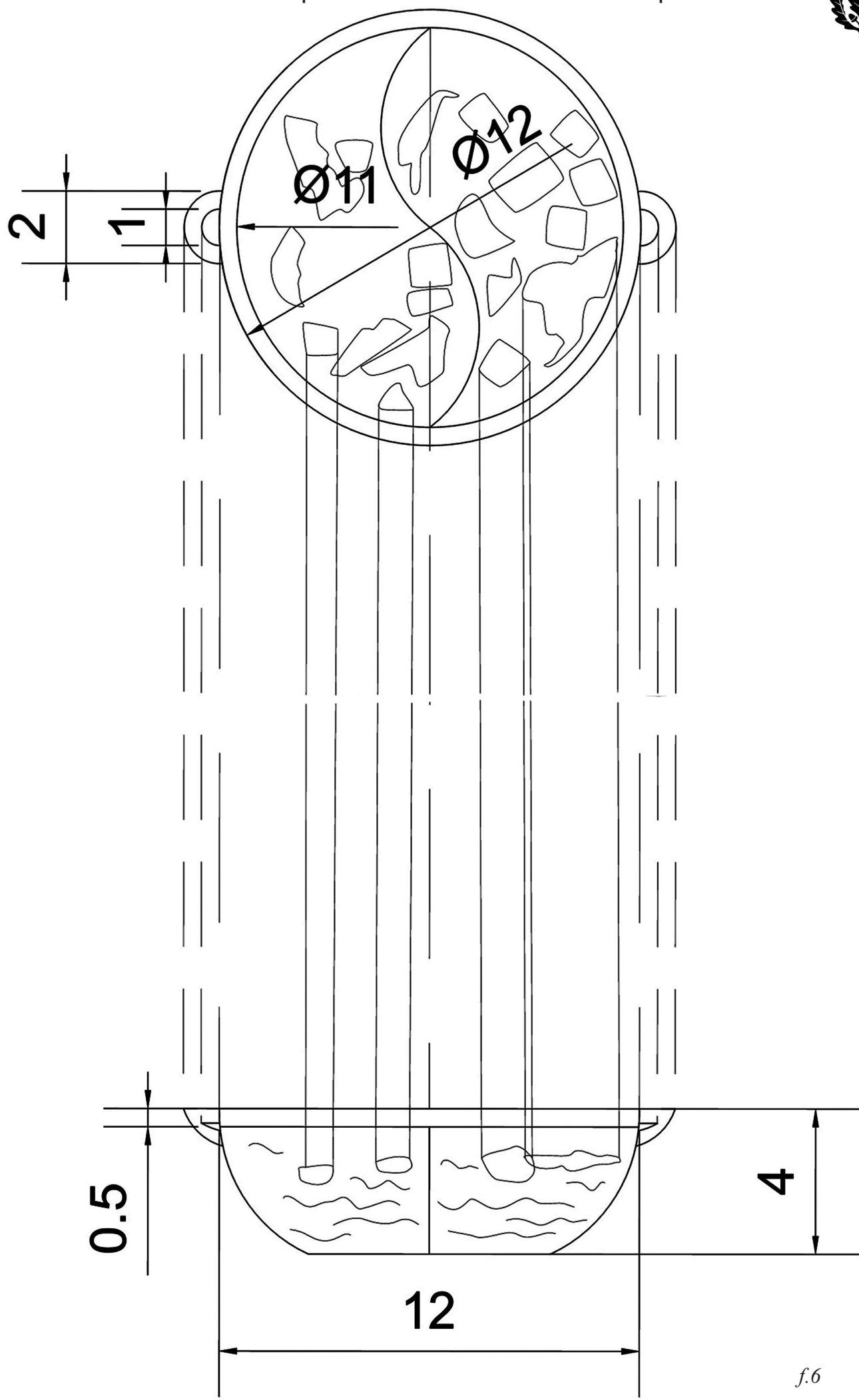
f.3



f.4



f.5



f.6

Space, Form, and Meaning

To connect personal to collective meaning, and to uncover implicit information that has a role in perceiving these “edible” study subjects as they’re associated to geographies and people through cultural practices of extraction, production, and the performances of consumption — preparing, cooking, and sharing.

Some designs reflect the specificities of a chosen cultural and/or ecological context. Others the experience of a place based on alternative practices to human consumption habits or suggested spatial arrangements where different identities can share knowledge as a practice of natural conservation. Components are derived either from the parameters for non-human beings to thrive or the proportions and spatial qualities for rituals and ceremonies to be performed.



f.7

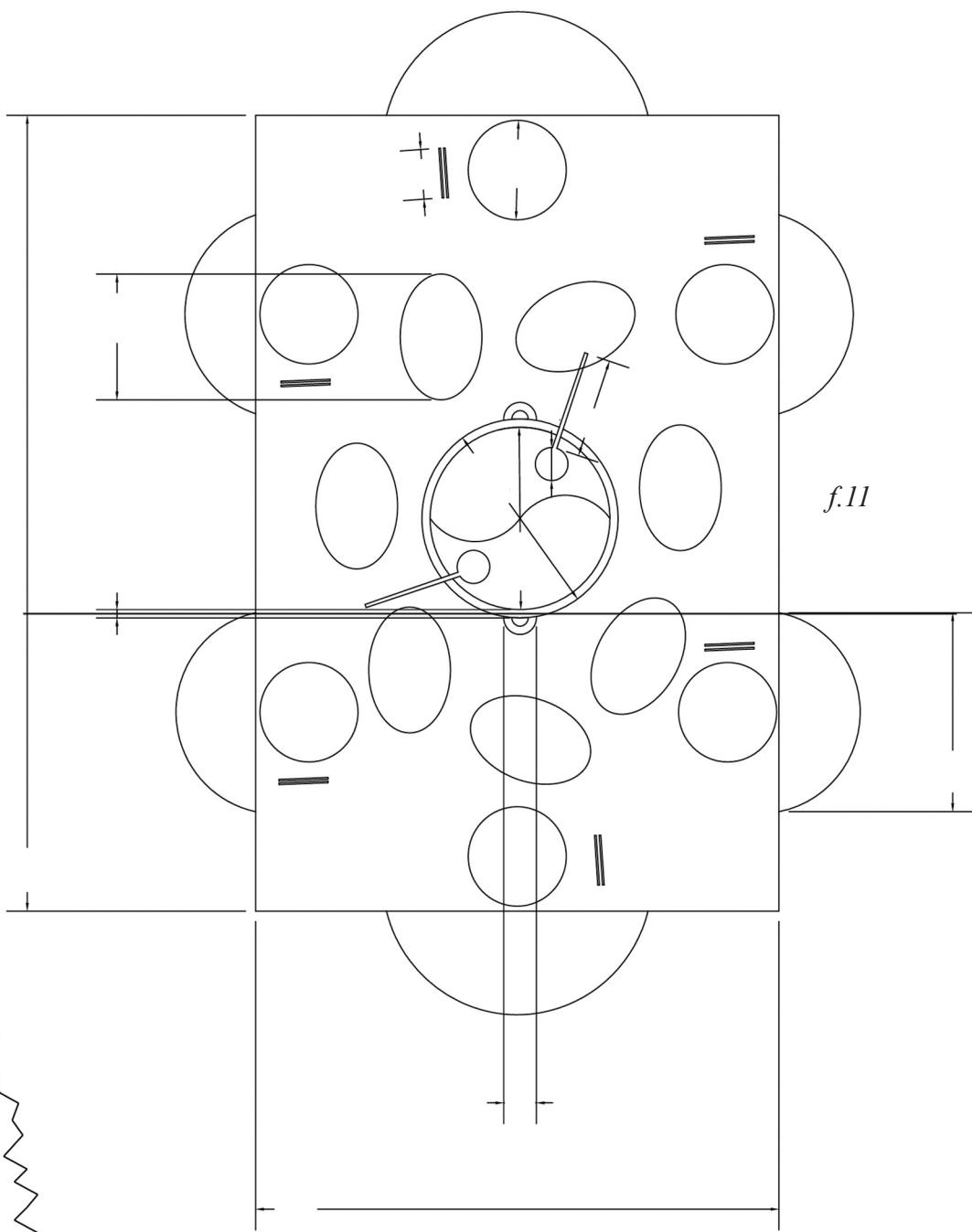
f.8



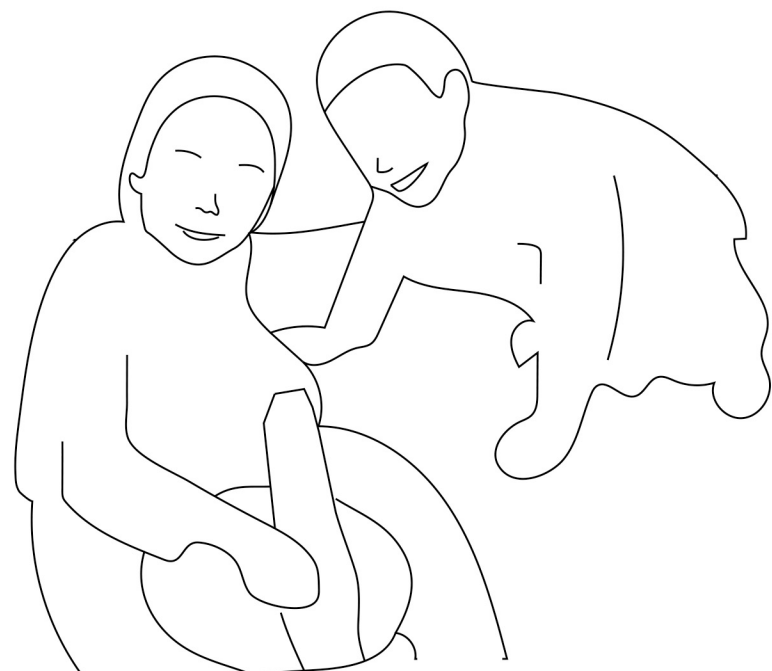
f.9



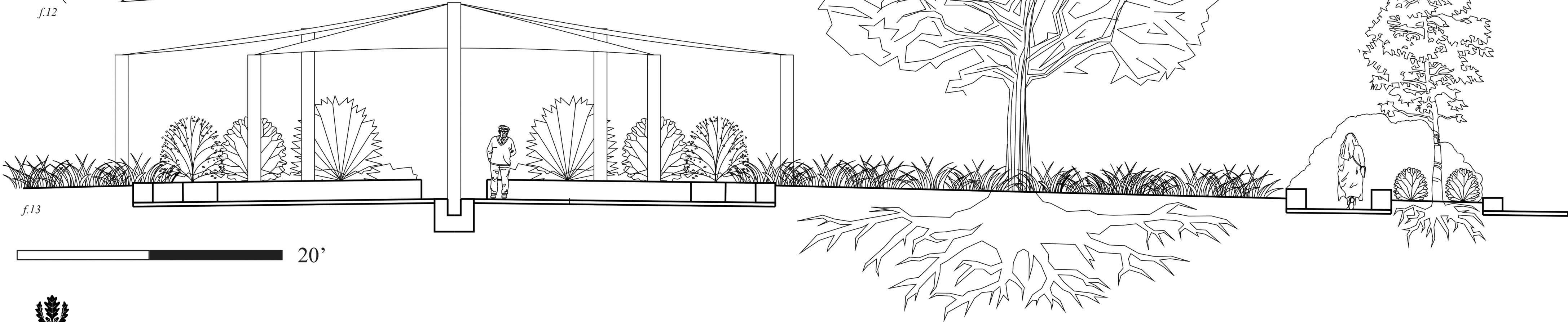
f.10



f.11



f.12



f.13



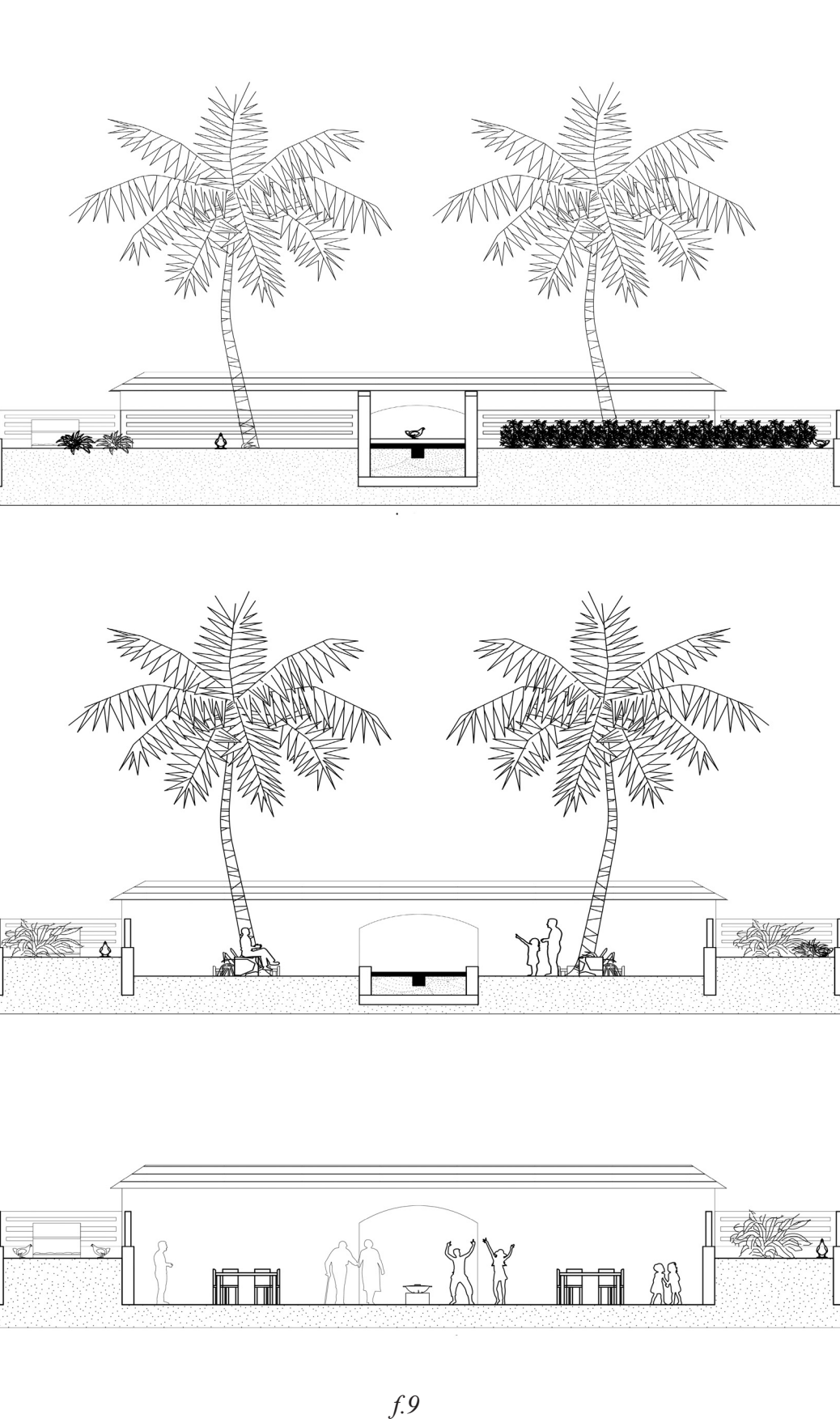
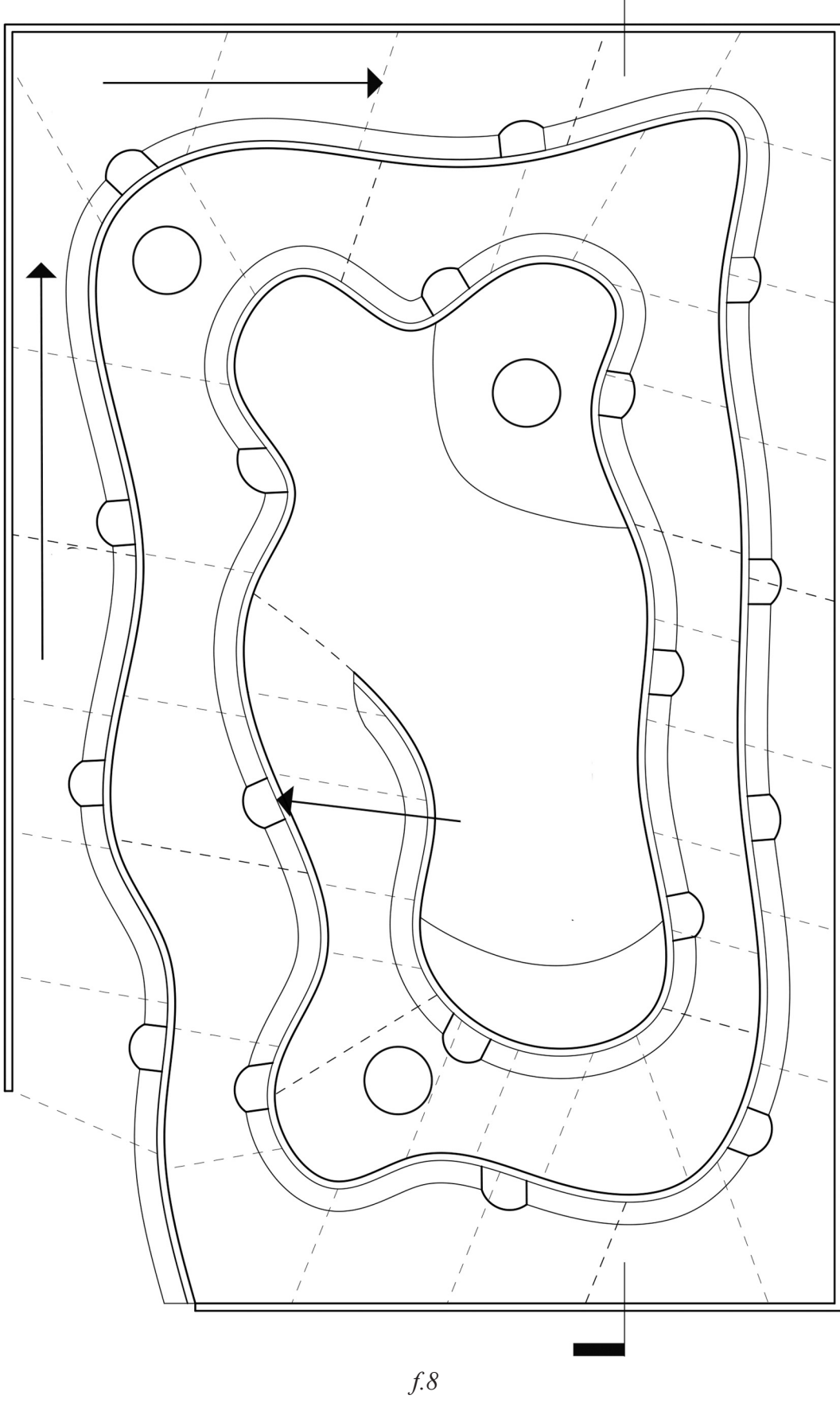
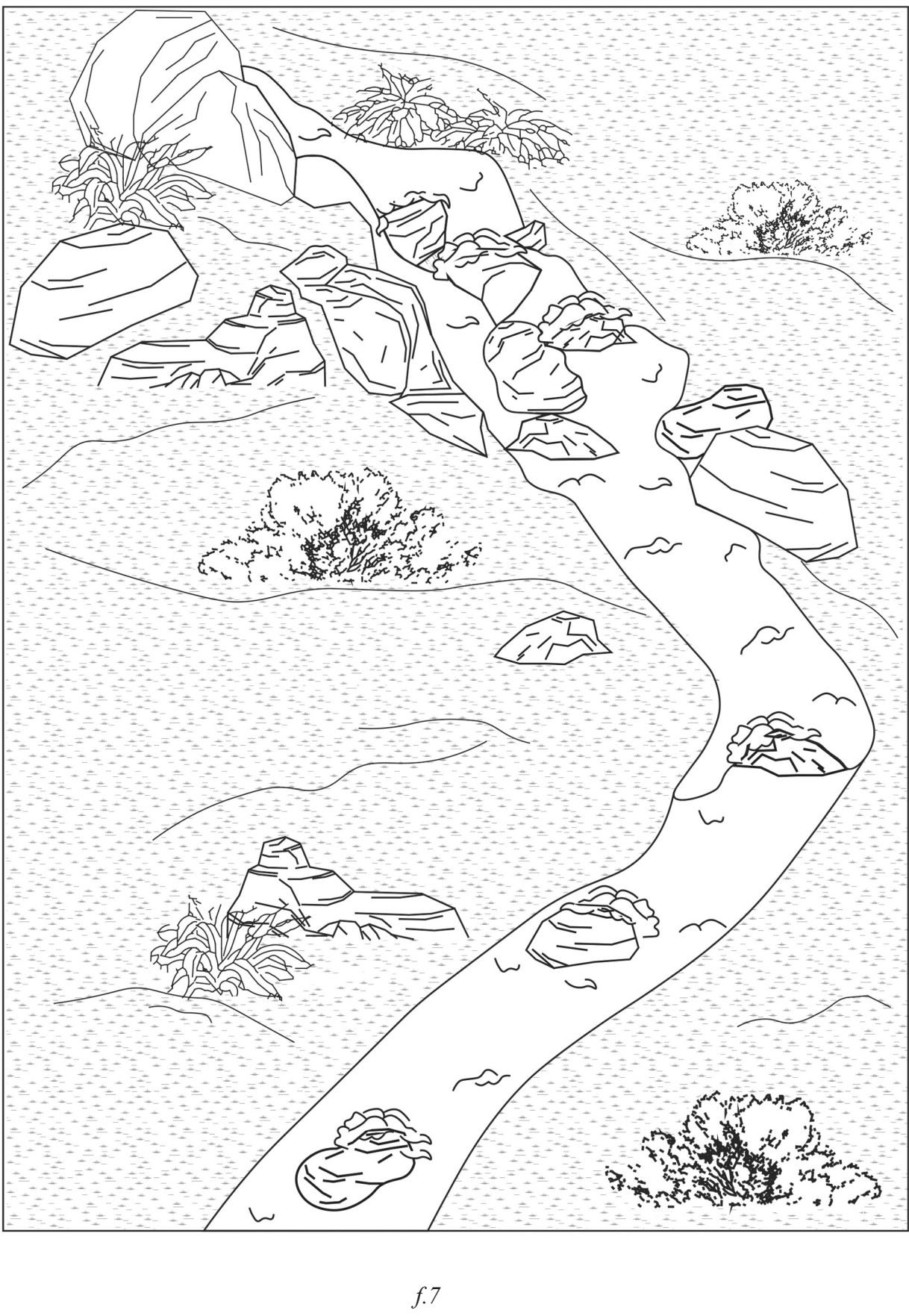
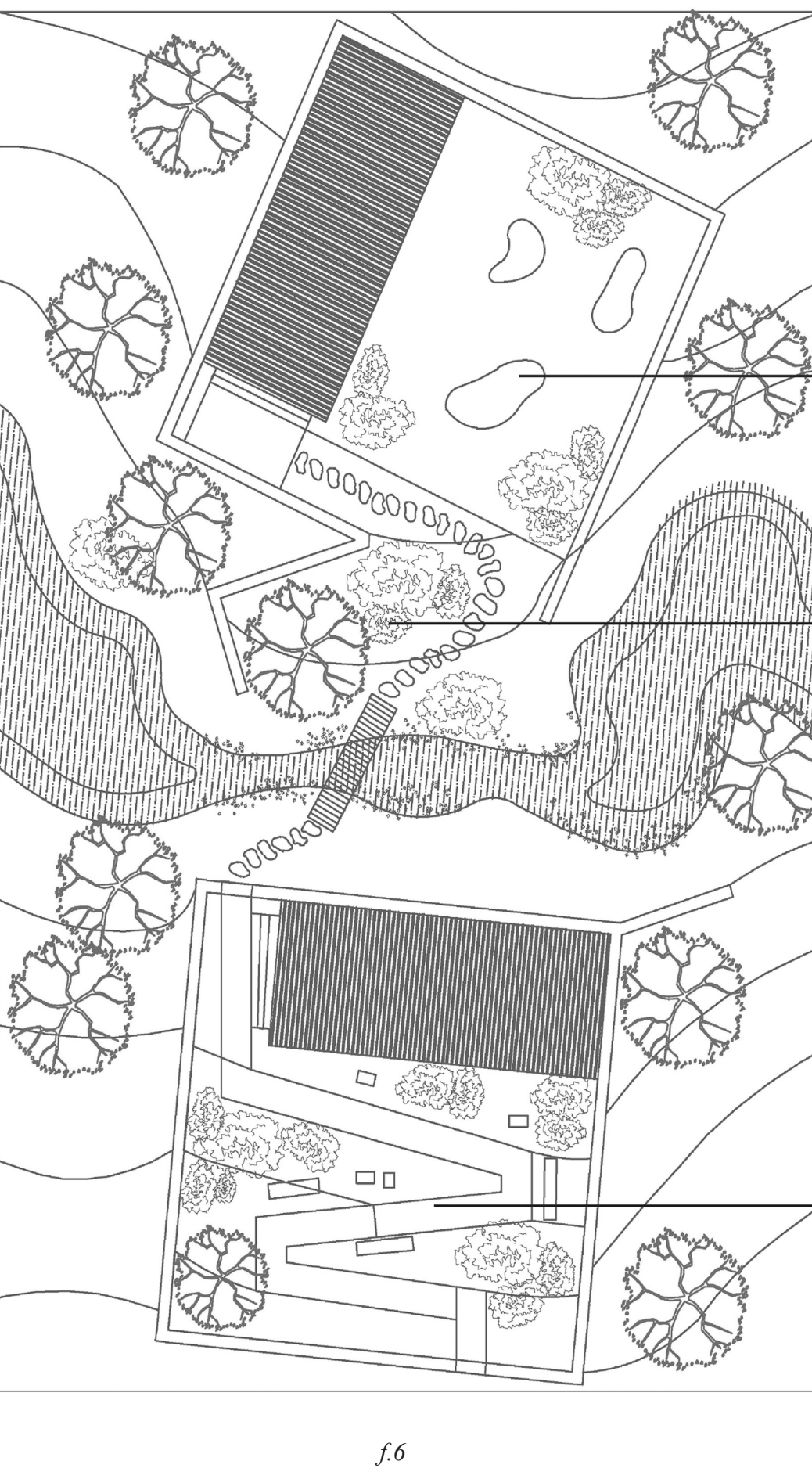
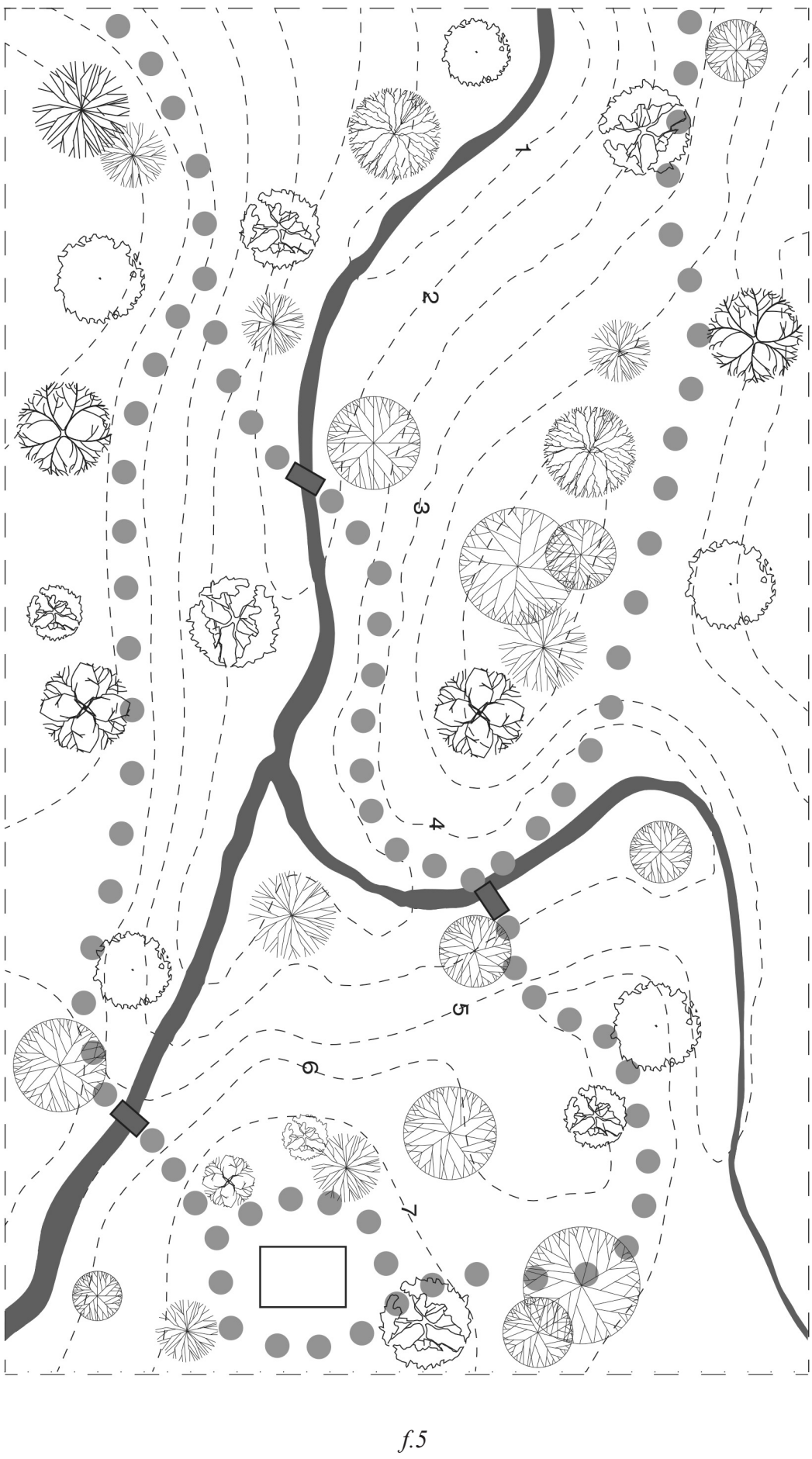
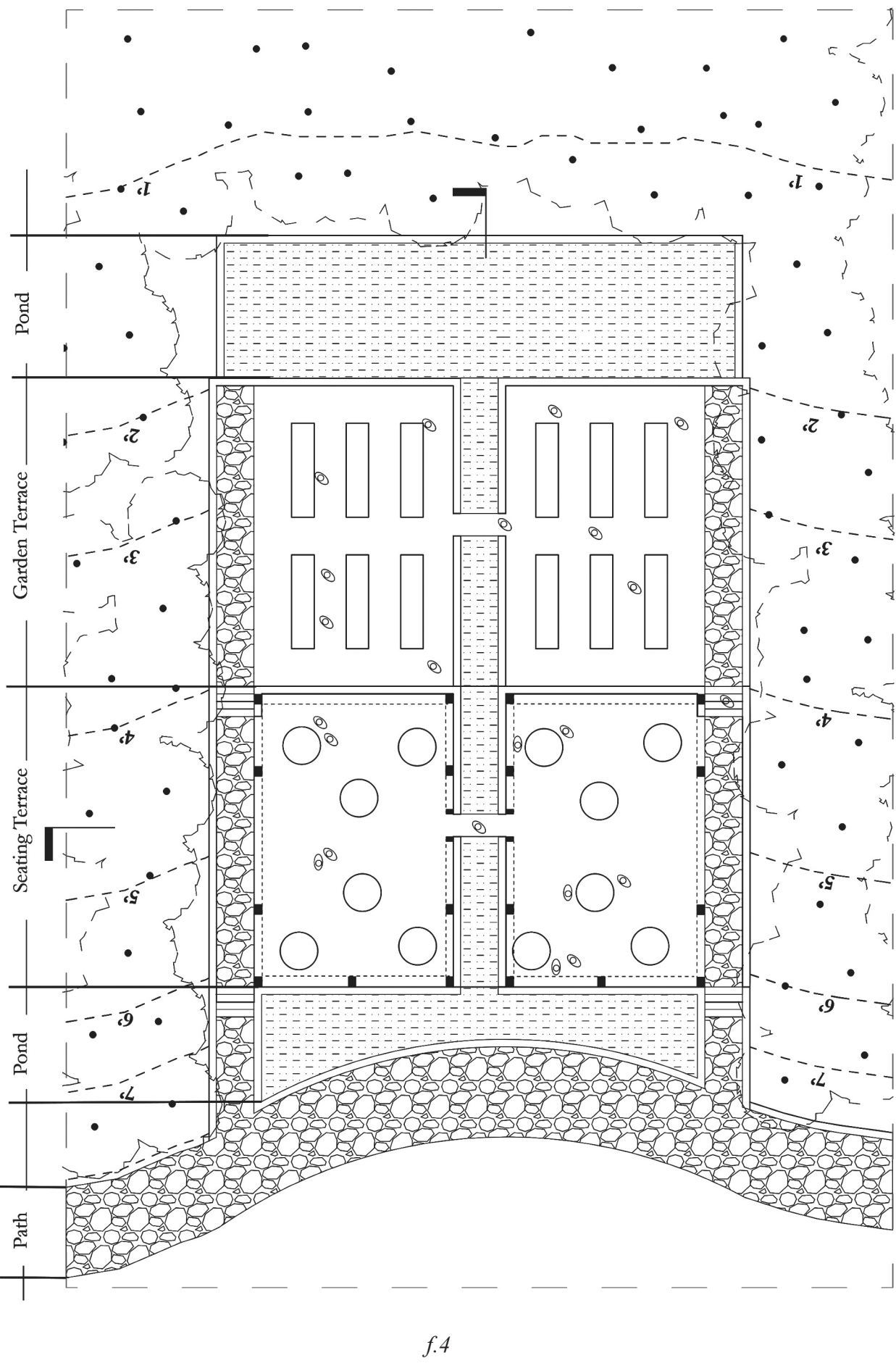
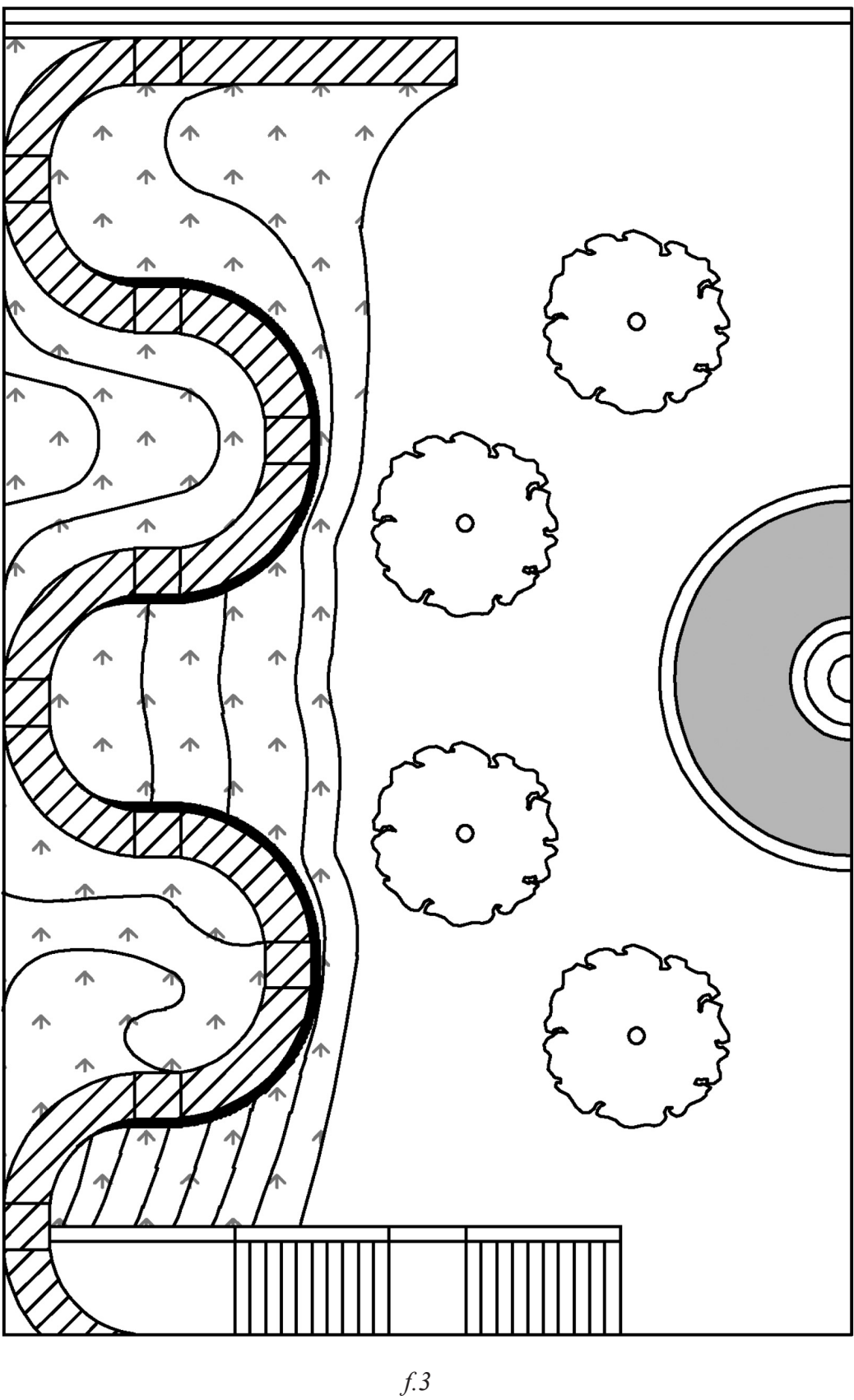
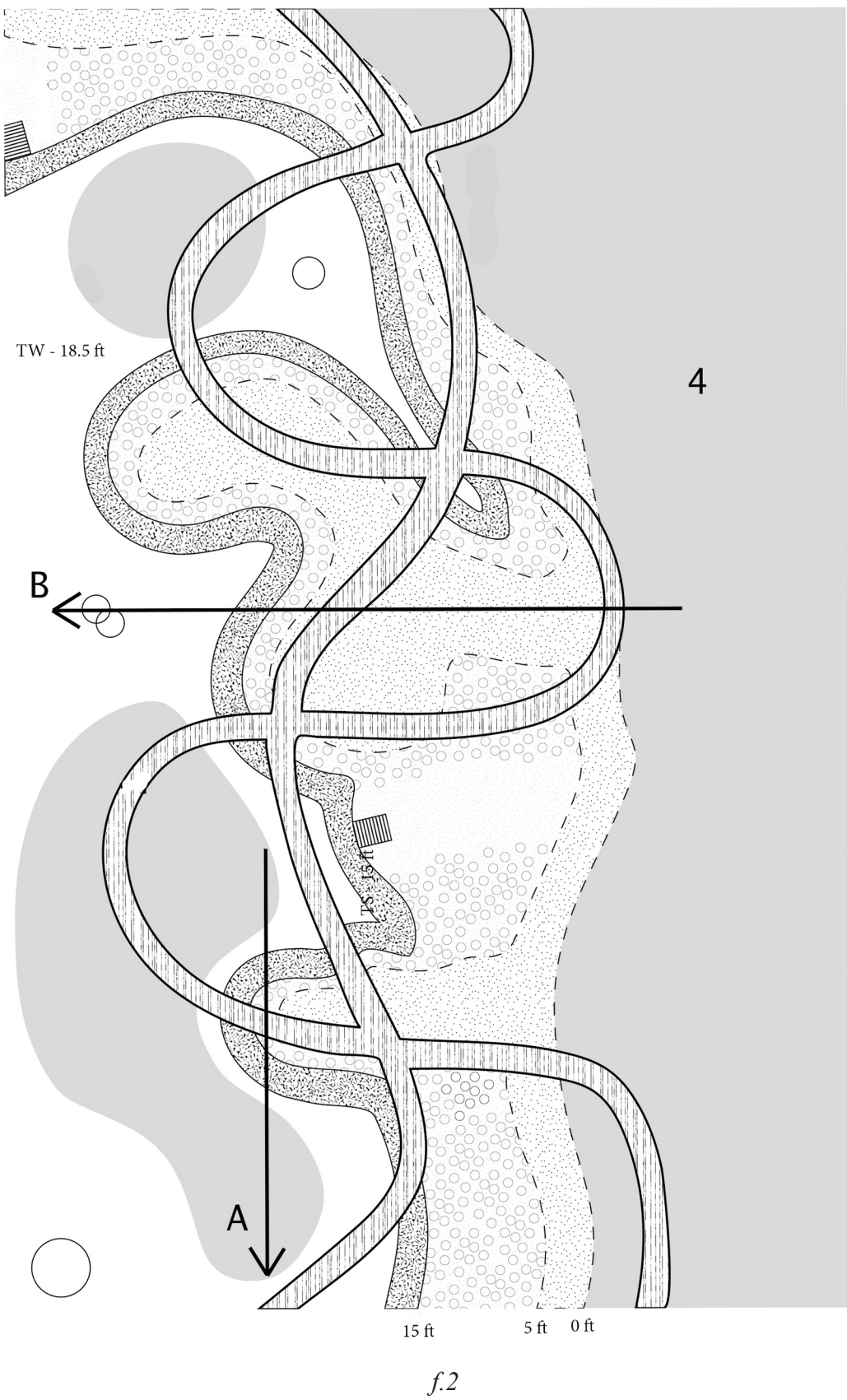
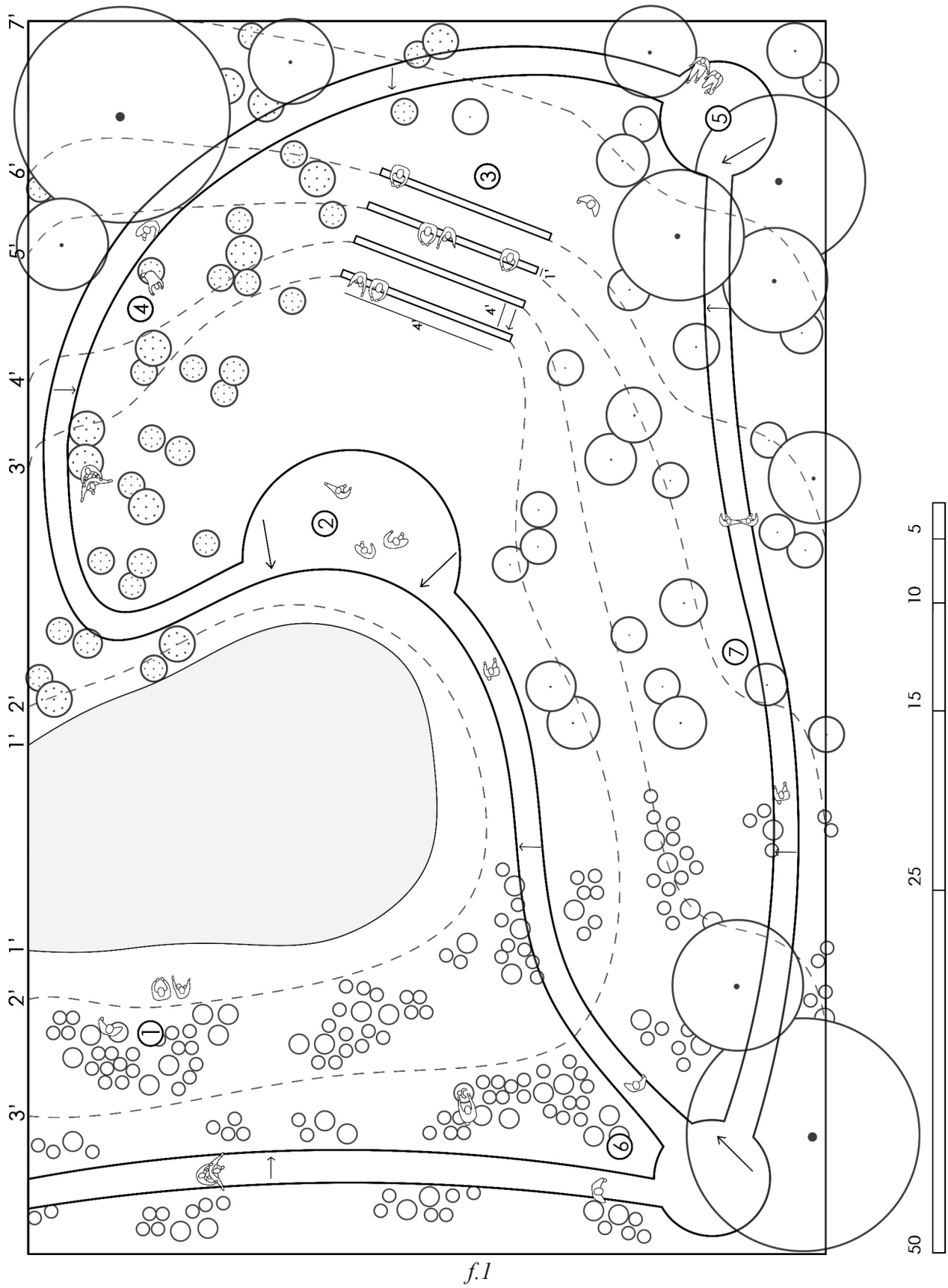
Iris Louise Armstrong (f13),
Matthew Bacon,
Christian Carmona (f1),
Fátima Cisneros-Ortega,
Darren Cole (f9),
Atlas Collazo (f8),
Sean Patrick Houssan (f10),
Sydney Jacobsen (f12),
Zachary Massi (f2),
Brendan Pugmire,
Alexander Vasallo,
Jason Robinson,
Britney Soubannarath,
Haley Vitko,
Kayla Villareal (f3,5),
Cassidy Wilson (f7),
Annie Zhu (f4,6,11),
Lucas Silva,
Seth Canaday

Space, Form, and Meaning

To connect personal to collective meaning, and to uncover implicit information that has a role in perceiving these “edible” study subjects as they’re associated to geographies and people through cultural practices of extraction, production, and the performances of consumption — preparing, cooking, and sharing.

Some designs reflect the specificities of a chosen cultural and/or ecological context. Others the experience of a place based on alternative practices to human consumption habits or suggested spatial arrangements where different identities can share knowledge as a practice of natural conservation. Components are derived either from the parameters for non-human beings to thrive or the proportions and spatial qualities for rituals and ceremonies to be performed.

Iris Louise Armstrong, Matthew Bacon (f6),
Christian Carmona, Fátima Cisneros-Ortega, Darren Cole,
Atlas Collazo (f9), Sean Patrick Houssan (f4), Sydnie Jacobsen
(f2), Zachary Massi, Brendan Pugmire, Alexander Vasallo (f8),
Jason Robinson (f3), Britney Soubannarath (f5,7)), Haley Vitko
(f1), Kayla Villareal, Cassidy Wilson, Annie Zhu, Lucas Silva,
Seth Canaday



Space, Form, and Meaning

To connect personal to collective meaning, and to uncover implicit information that has a role in perceiving these “edible” study subjects as they’re associated to geographies and people through cultural practices of extraction, production, and the performances of consumption — preparing, cooking, and sharing.

Some designs reflect the specificities of a chosen cultural and/or ecological context. Others the experience of a place based on alternative practices to human consumption habits or suggested spatial arrangements where different identities can share knowledge as a practice of natural conservation. Components are derived either from the parameters for non-human beings to thrive or the proportions and spatial qualities for rituals and ceremonies to be performed.

- Iris Louise Armstrong

(f5,16),

Matthew Bacon (f22),

Christian Carmona

(f24),

Fátima Cisneros-Ortega

(f3),

Darren Cole (f6),

Atlas Collazo

(f1,11,13,23,25),

Sean Patrick Houssan

(f8,9),

Sydnie Jacobsen (f19),
- Zachary Massi (f20),

Brendan Pugmire,

Alexander Vasallo (18),

Jason Robinson (f1),

Britney Soubannarath

(f10),

Haley Vitko (f4),

Kayla Villareal (f2),

Cassidy Wilson (f12),

Annie Zhu

(f7,14,15,17,21)

Lucas Silva,

Seth Canaday

